

PART NAME

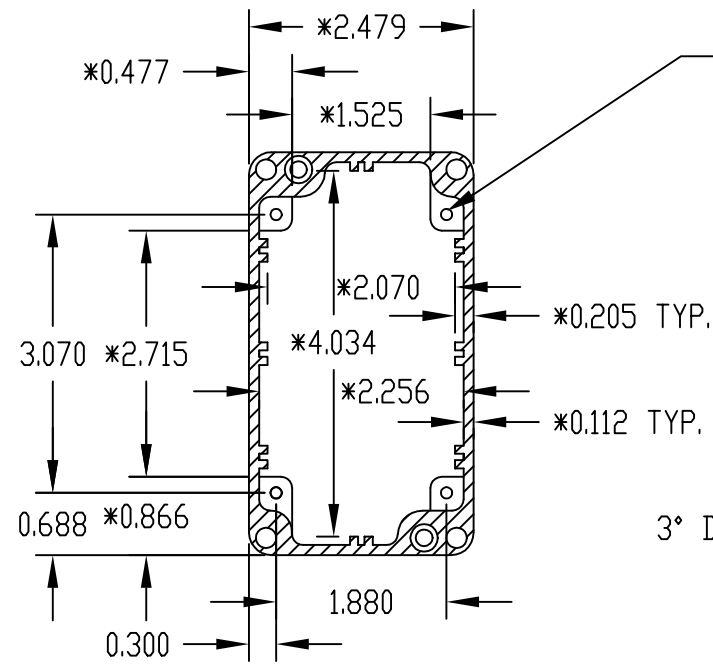
NEMA 4 ENCLOSURE

PART No.

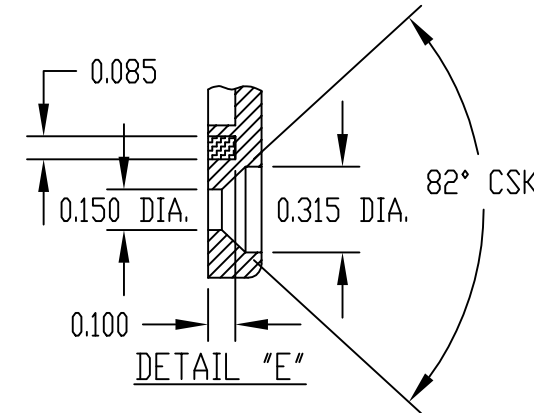
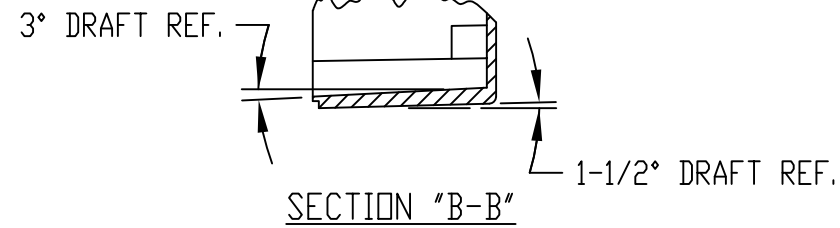
AN-1303, AN-1303-G, AN-2803 & AN-2803-B

REV. DATE

12-6-07



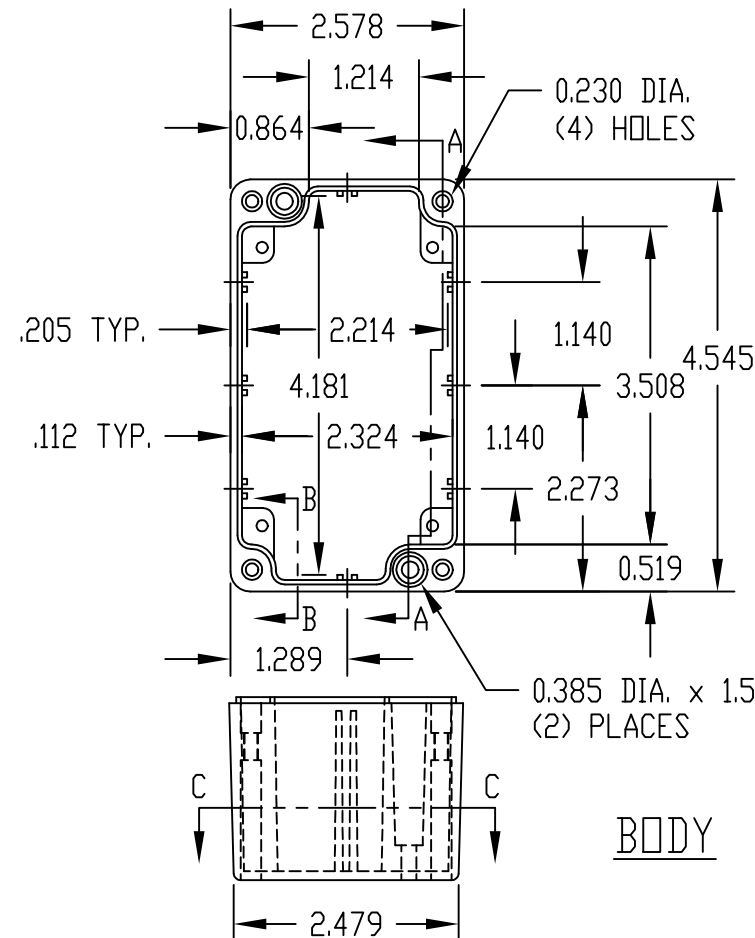
SECTION "C-C"
* DIMENSIONS ARE AT BOTTOM OF ENCLOSURE



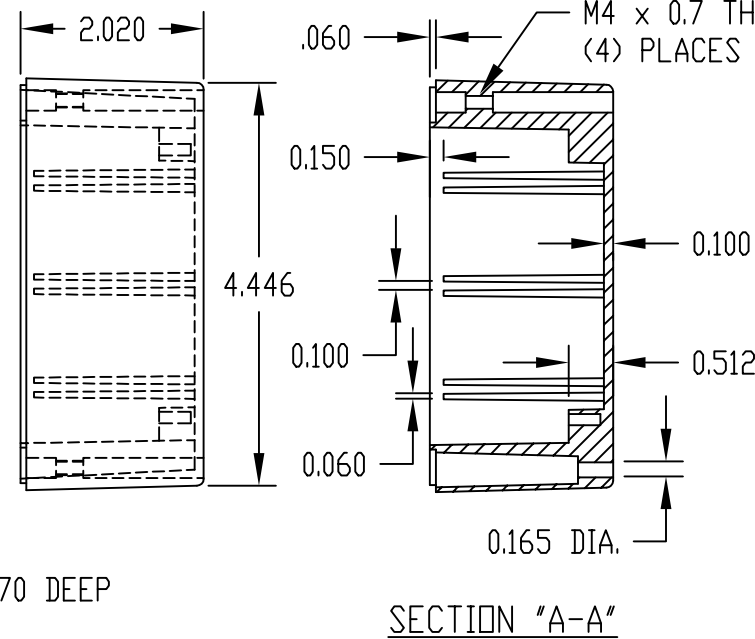
MATERIAL: ALUMINUM ALLOY #ADC-12

FINISH: NATURAL (NO SUFFIX)
GRAY (SUFFIX -G)
SMOOTH BLACK (SUFFIX -B)

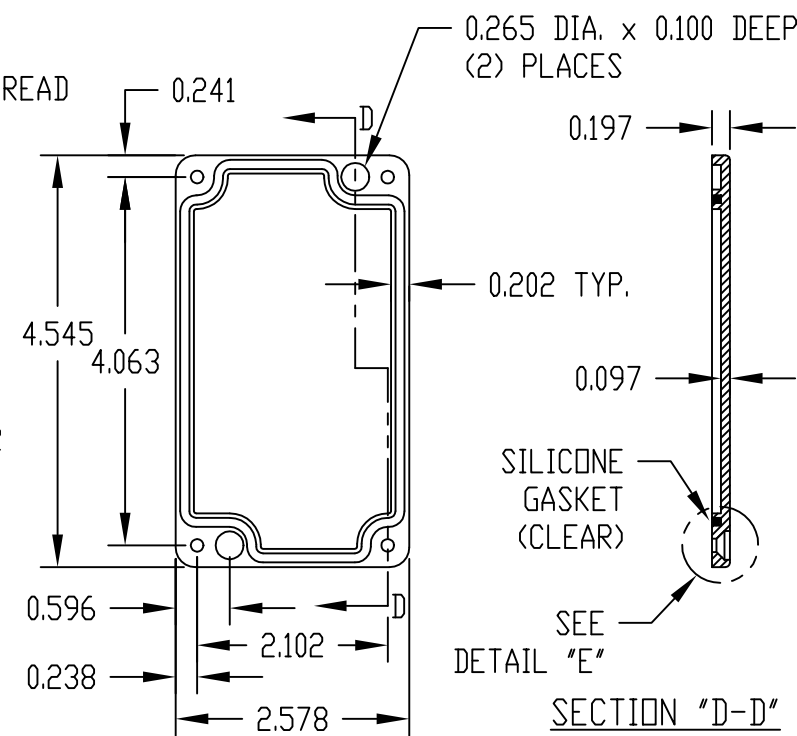
- NOTES:
- 1) FOUR (4) M4 x 20mm (0.787") LG. SCREWS SUPPLIED FOR ASSEMBLY OF COVER TO BODY.
 - 2) ALL HOLE DIAMETERS HAVE ±0.005 TOLERANCE ALL OTHER DIMENSIONS HAVE ±0.015 TOLERANCE



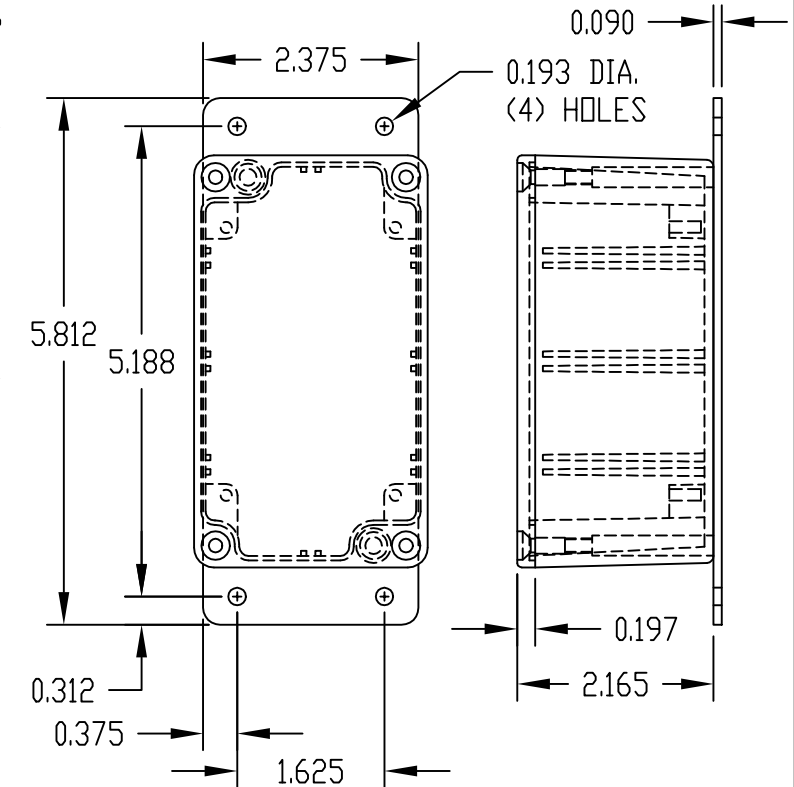
BODY



SECTION "A-A"



COVER



PART NO. AN-2803 & AN-2803-B
ARE SUPPLIED WITH A WELDED
ON MOUNTING BRACKET ONLY.